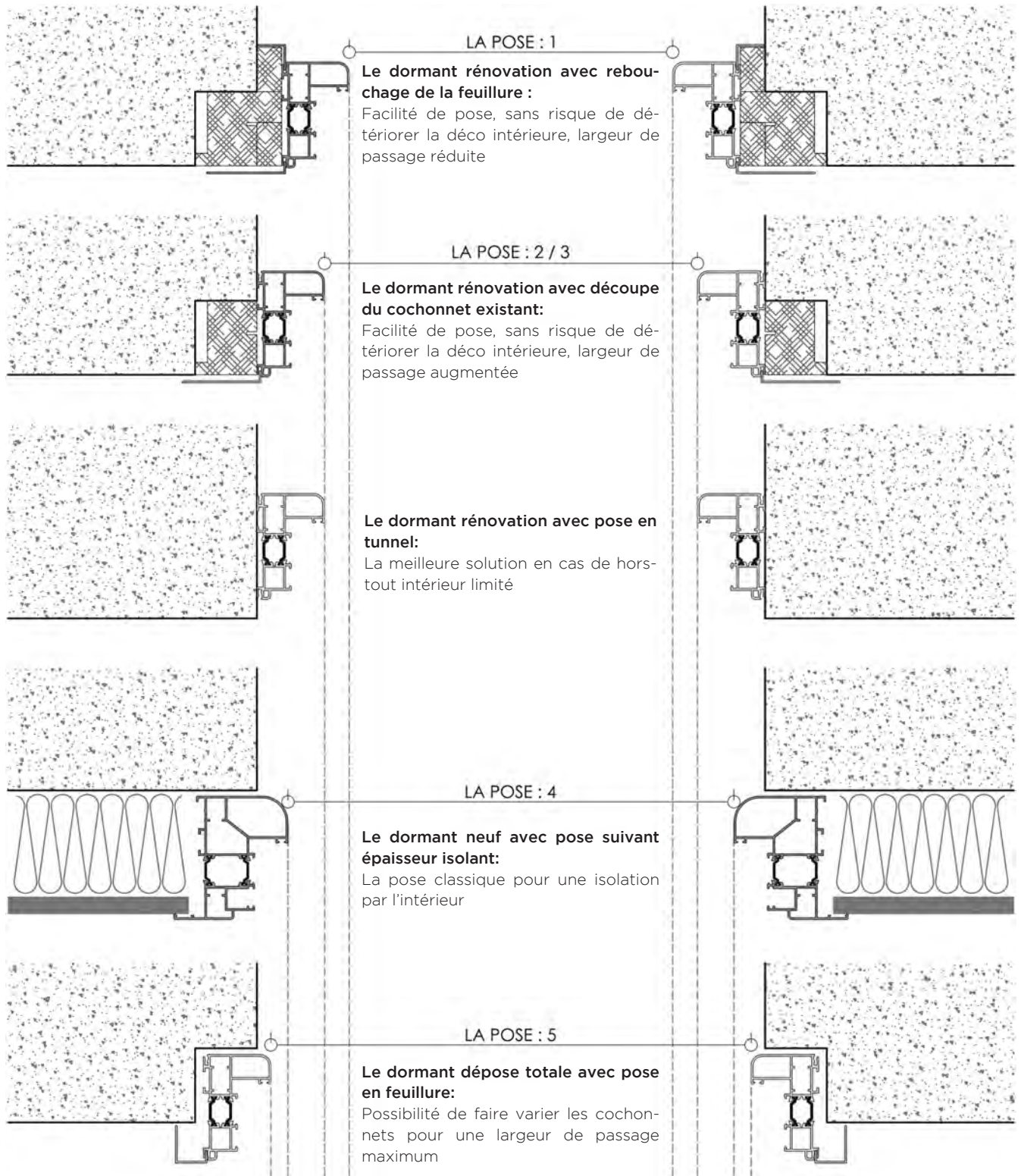
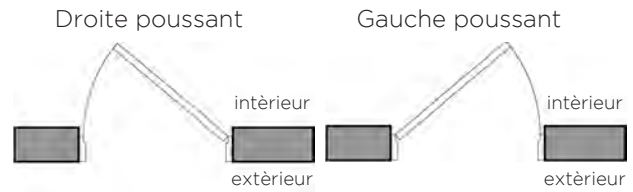


Les différents types de pose et leur incidence sur la largeur de passage



OUVERTURE

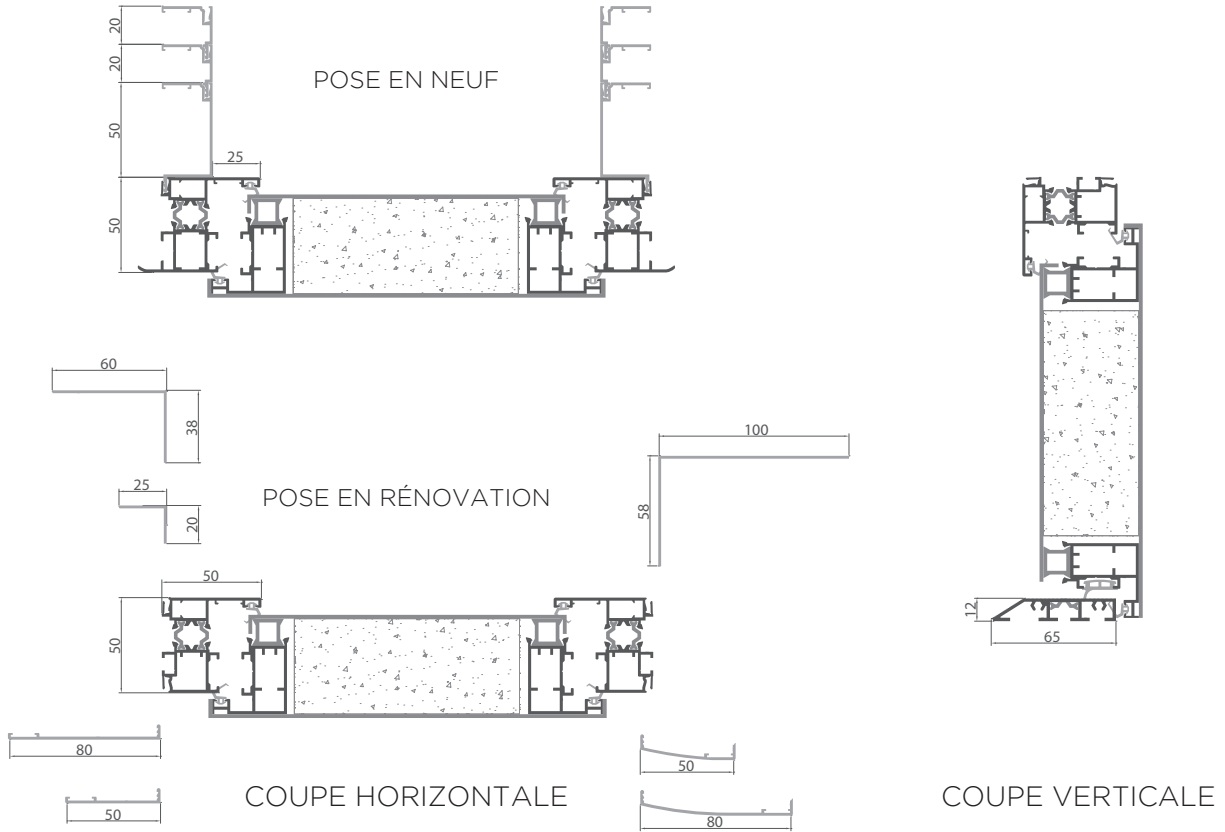
Le sens d'ouverture est déterminé en se plaçant à l'extérieur de la maison



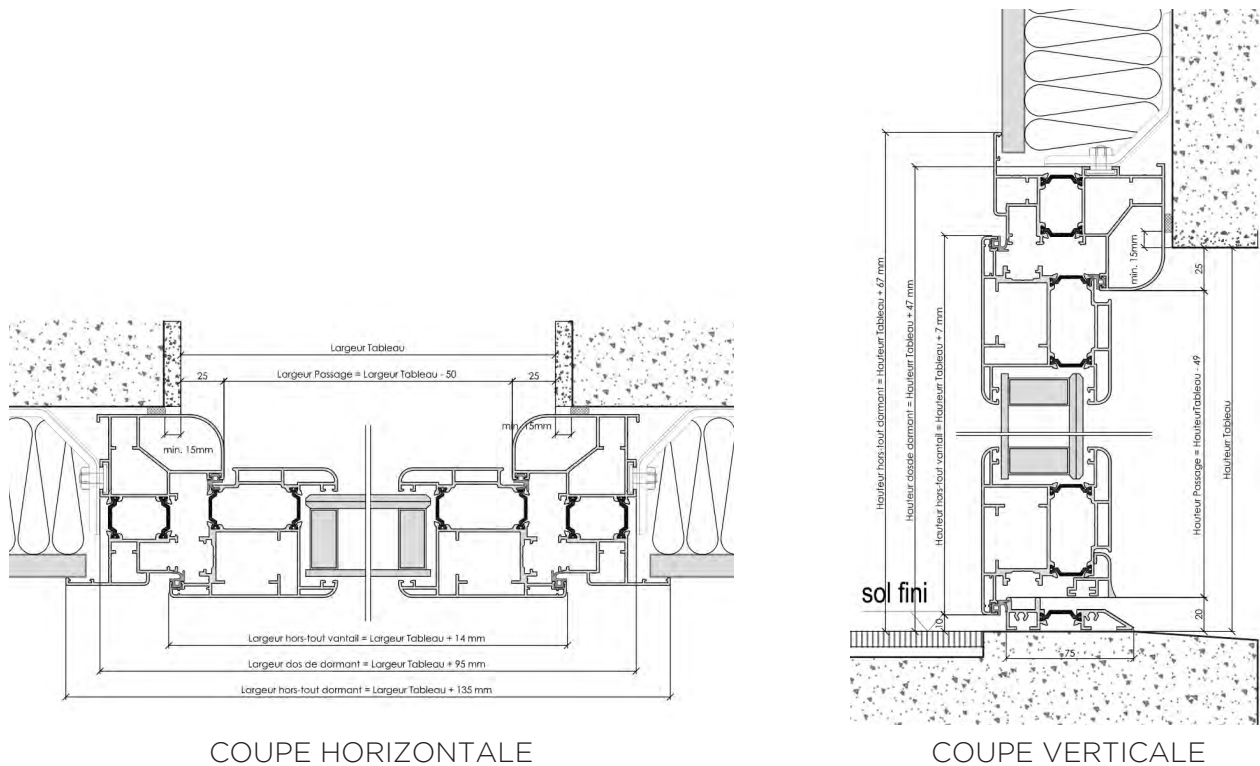


Le cahier technique

LA PORTE ECOBLOCK 50



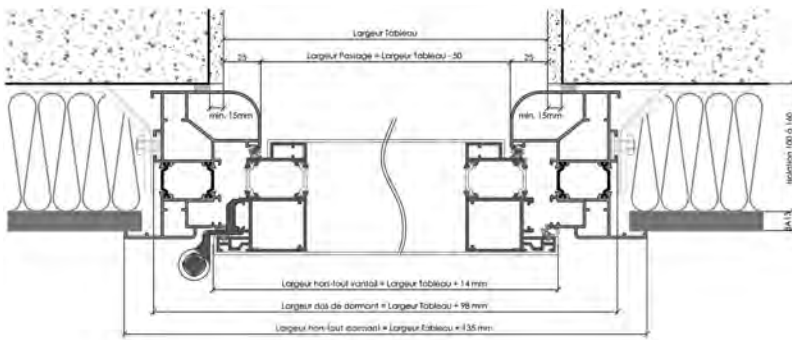
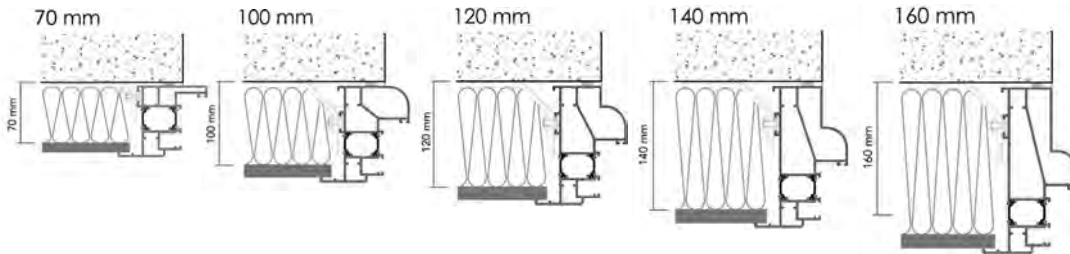
LA PORTE VITRÉE



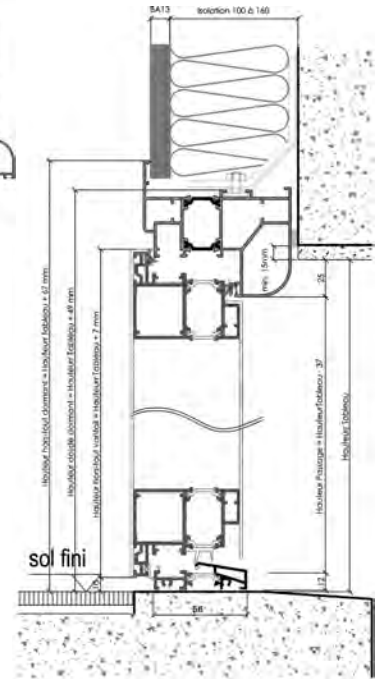


LA PORTE CONFORTBLOCK 80

DORMANT POSE NEUF APPLIQUE

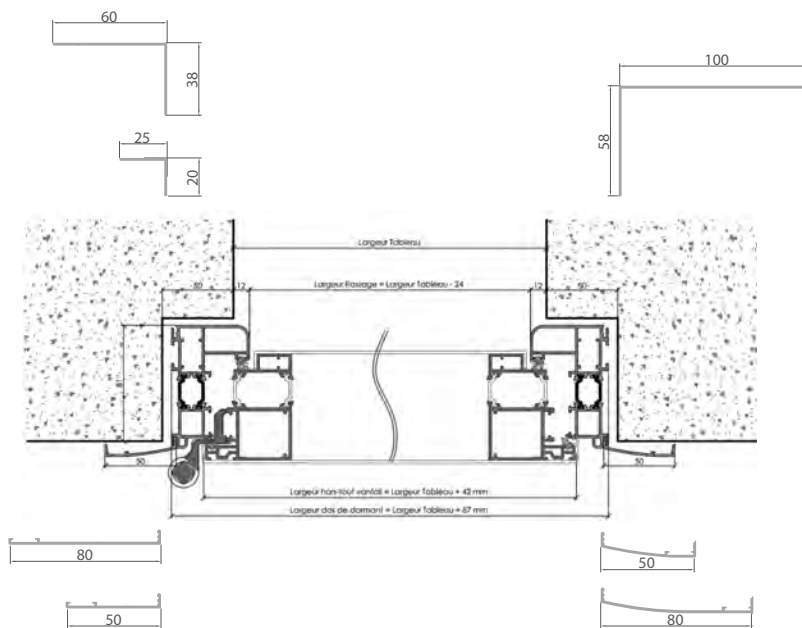


COUPE HORIZONTALE

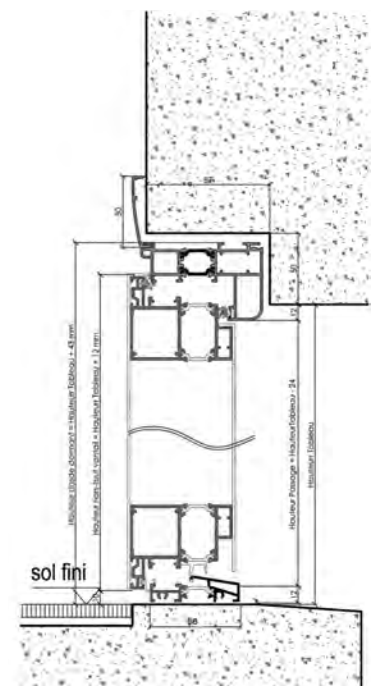


COUPE VERTICALE

DORMANT RÉNOVATION



COUPE HORIZONTALE



COUPE VERTICALE

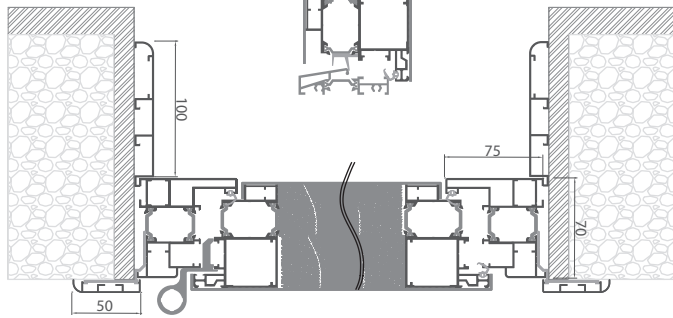
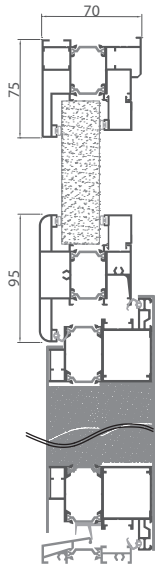


Le cahier technique

POSE EN TUNNEL

DORMANT
AFFLEURANT FR70ES
AVEC IMPOSTE

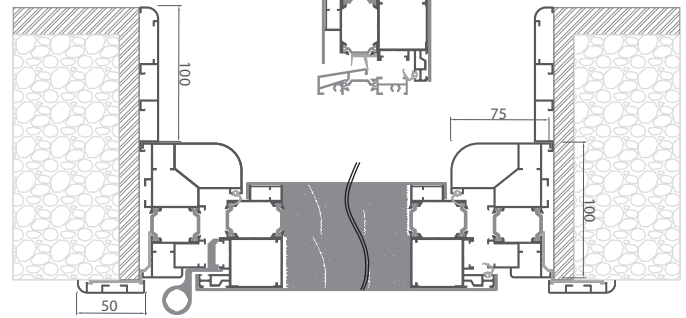
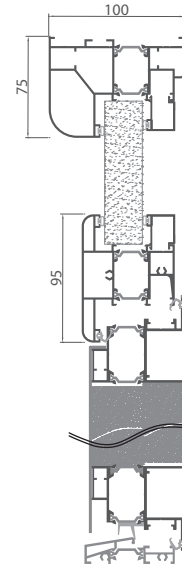
COUPE VERTICALE



COUPE HORIZONTALE

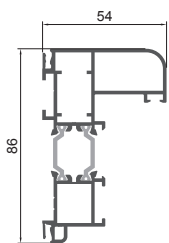
DORMANT FR100ES
AVEC IMPOSTE

COUPE VERTICALE

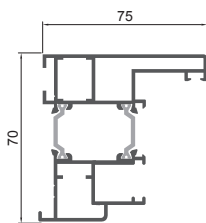


COUPE HORIZONTALE

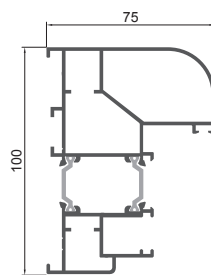
DIFFÉRENTS DORMANT



DORMANT
RÉNO RN54

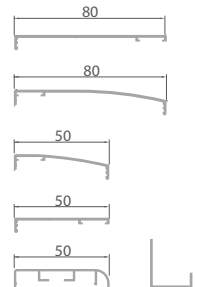


DORMANT
FR70ES SANS
AILE INTÉRIEUR

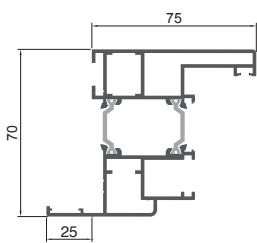
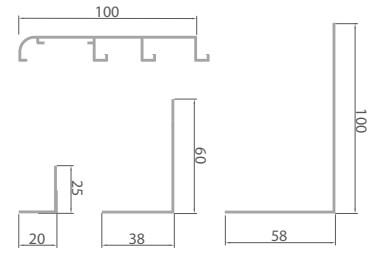


DORMANT
FR100ES SANS
AILE INTÉRIEUR

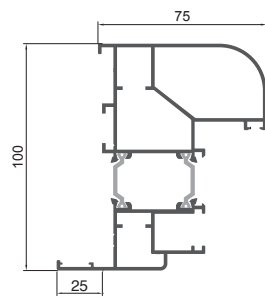
COUVRE JOINTS



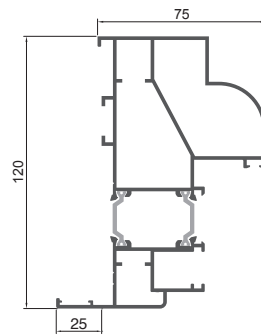
HABILLAGES



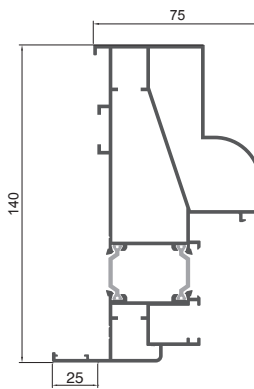
DORMANT FR70 AVEC
AILE INTÉRIEUR



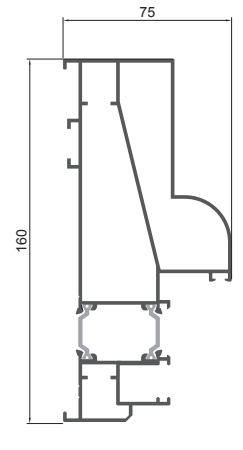
DORMANT FR100
AVEC AILE INTÉRIEUR



DORMANT FR120
AVEC AILE INTÉRIEUR



DORMANT FR140
AVEC AILE INTÉRIEUR



DORMANT FR160
AVEC AILE INTÉRIEUR